

THE TIDEVIEW PLAN | 2,649 SF 4 BED/4.5 BATH/2-CAR GARAGE



MODERN



COASTAL

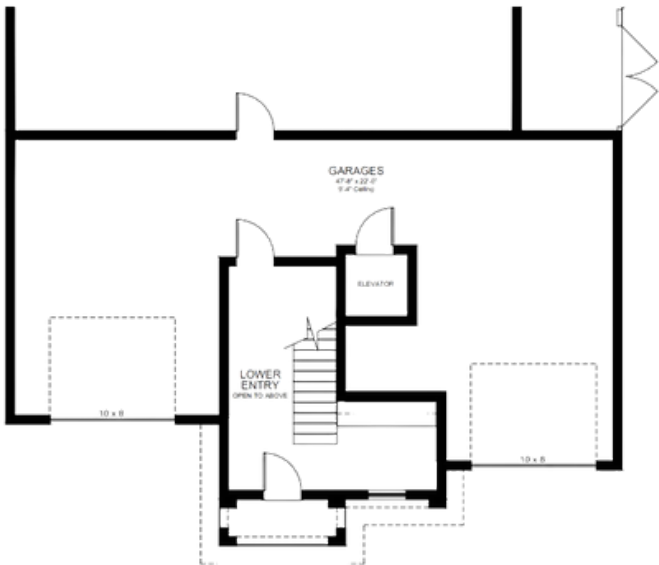
The Island Series

Builder reserves the right to modify or change floor plans, features and pricing without notice. All floor plans and renderings are conceptual in nature and may vary from actual homes. Square footage is approximate and may vary.

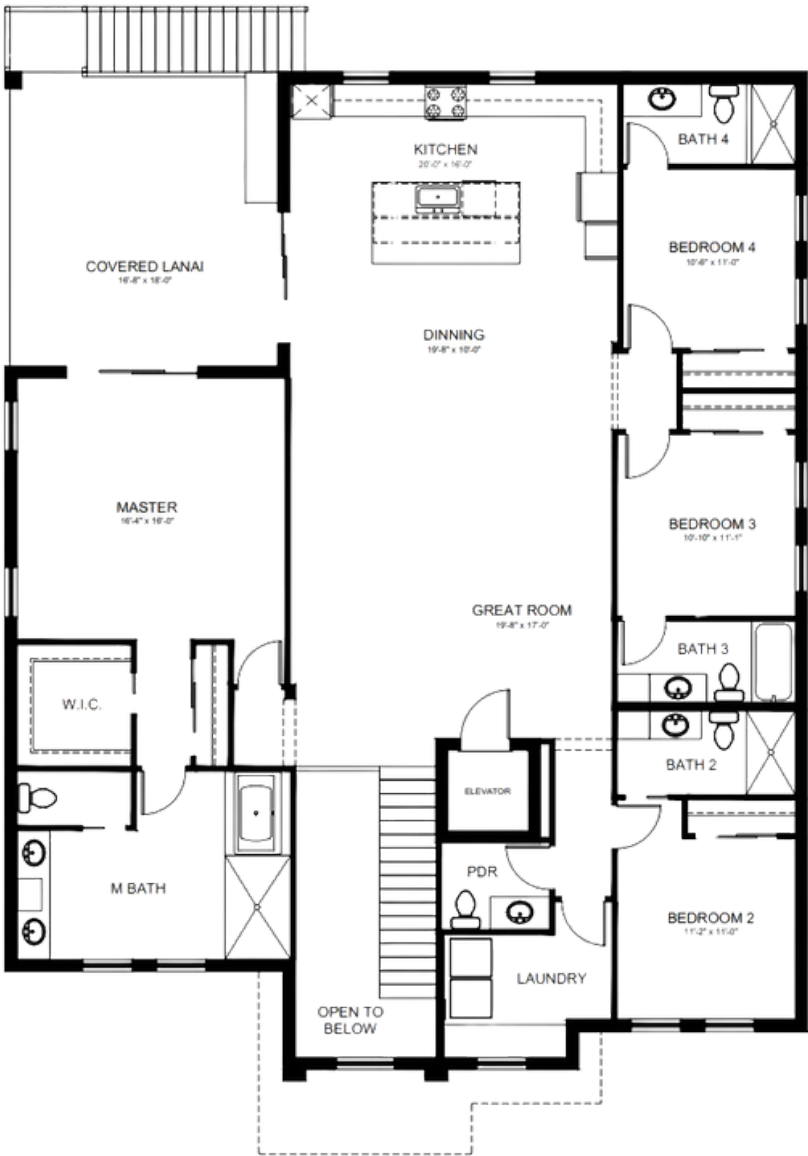
© 2025 Yoder Homes | All Rights Reserved | RV 10.29.25



ENTRY LEVEL
FLOOR PLAN



MAIN LEVEL
FLOOR PLAN



The Island Series

Builder reserves the right to modify or change floor plans, features and pricing without notice. All floor plans and renderings are conceptual in nature and may vary from actual homes. Square footage is approximate and may vary.